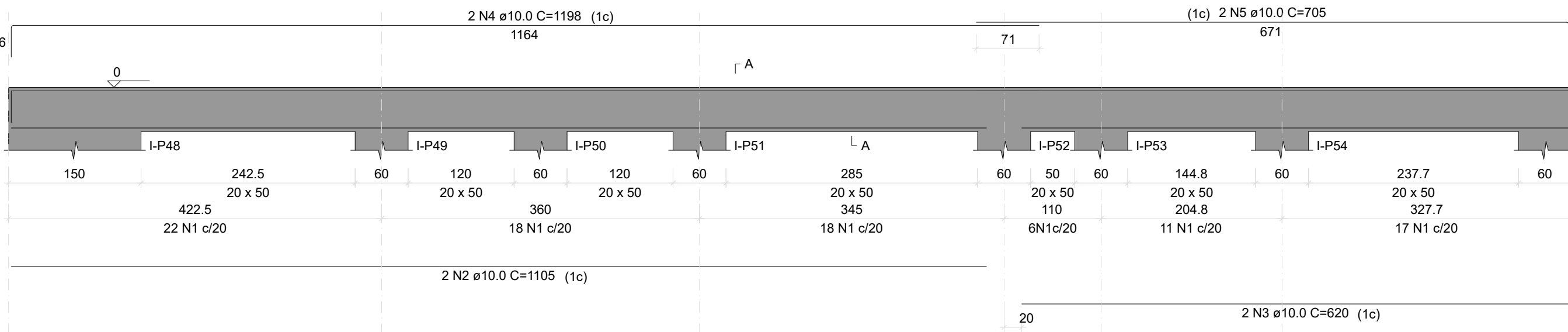
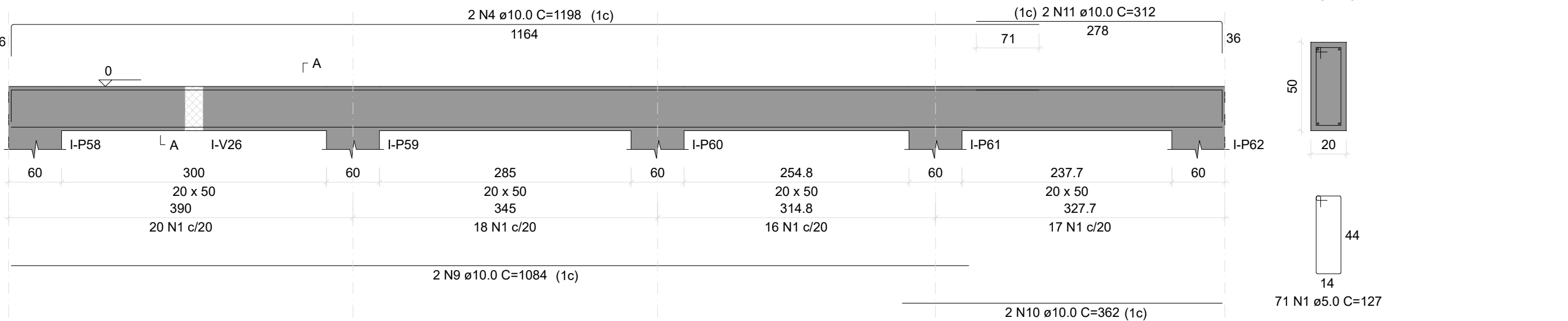


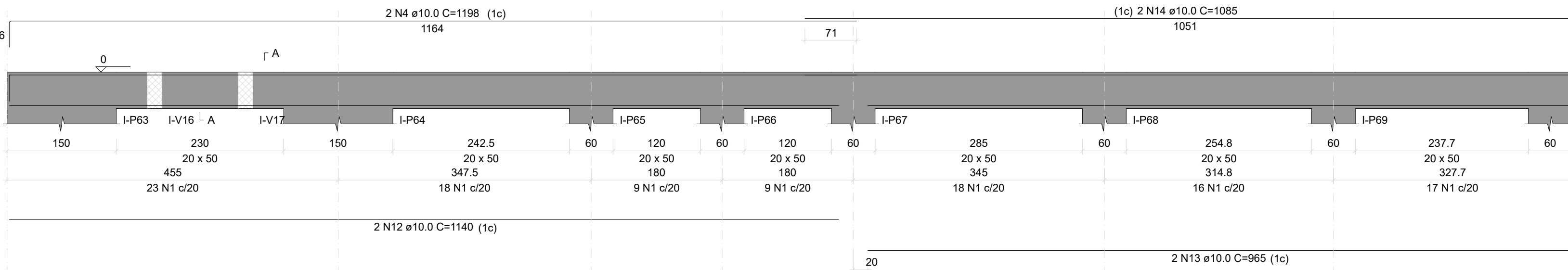
I-V10  
ESC 1:50



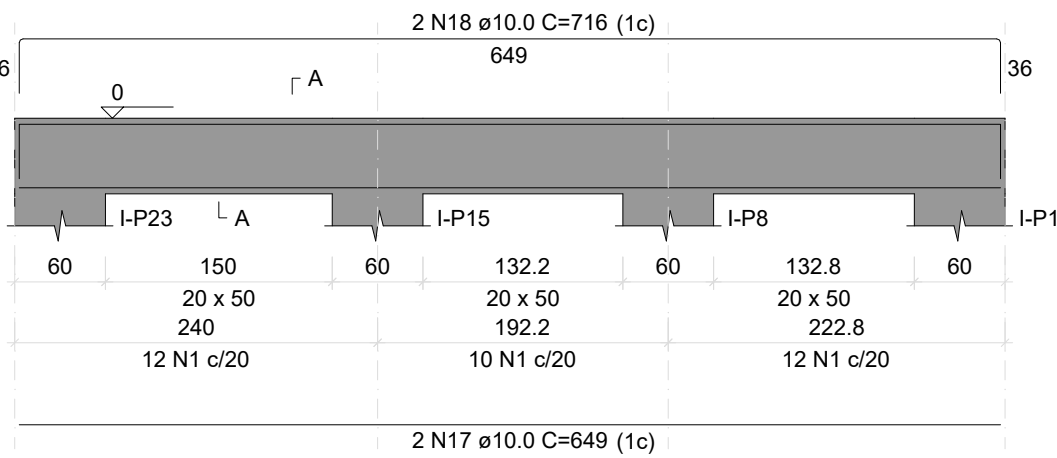
I-V12  
ESC 1:50



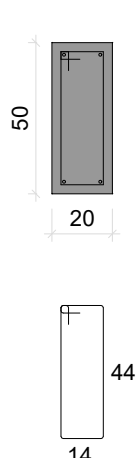
I-V13  
ESC 1:50



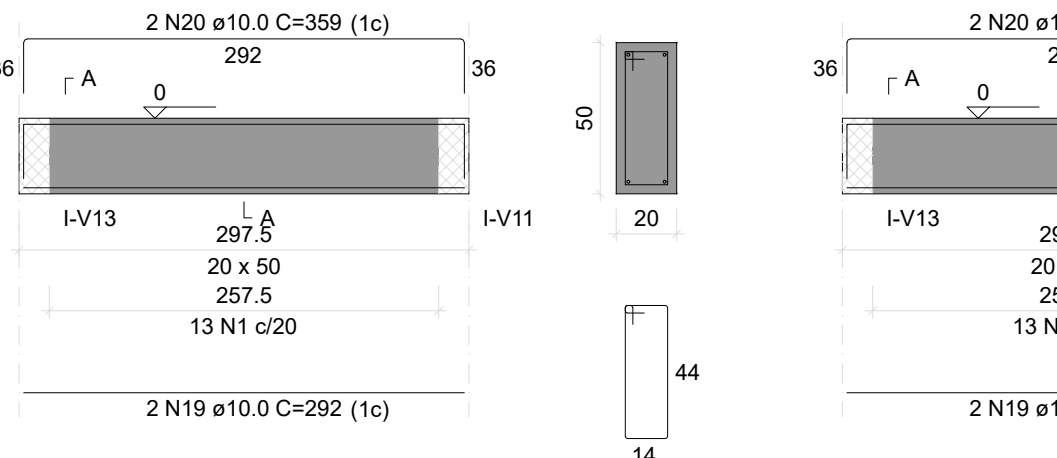
I-V15  
ESC 1:50



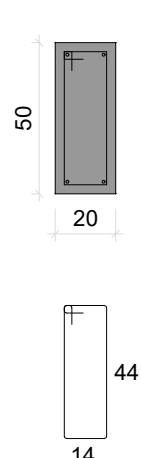
SEÇÃO A-A  
ESC 1:25



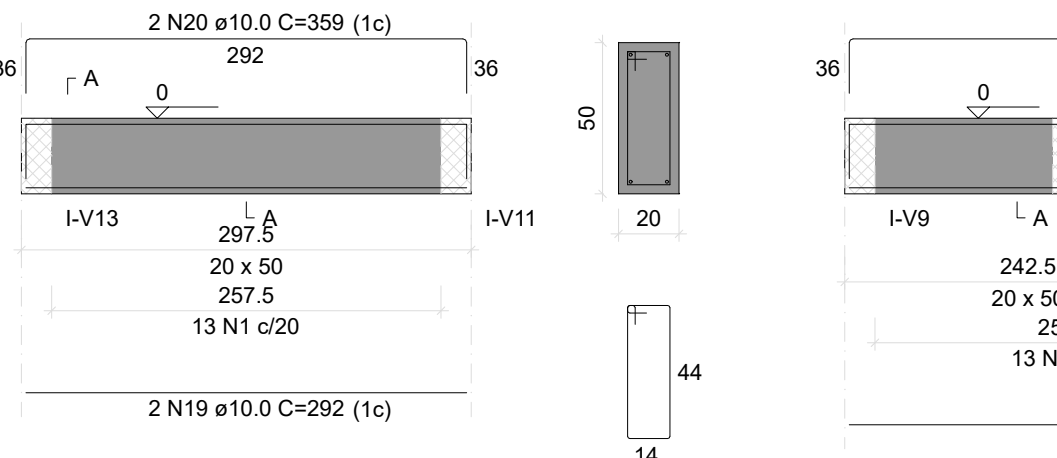
I-V16  
ESC 1:50



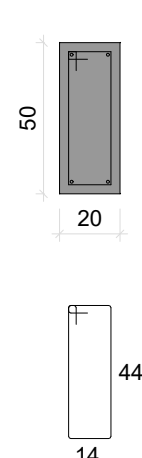
SEÇÃO A-A  
ESC 1:25



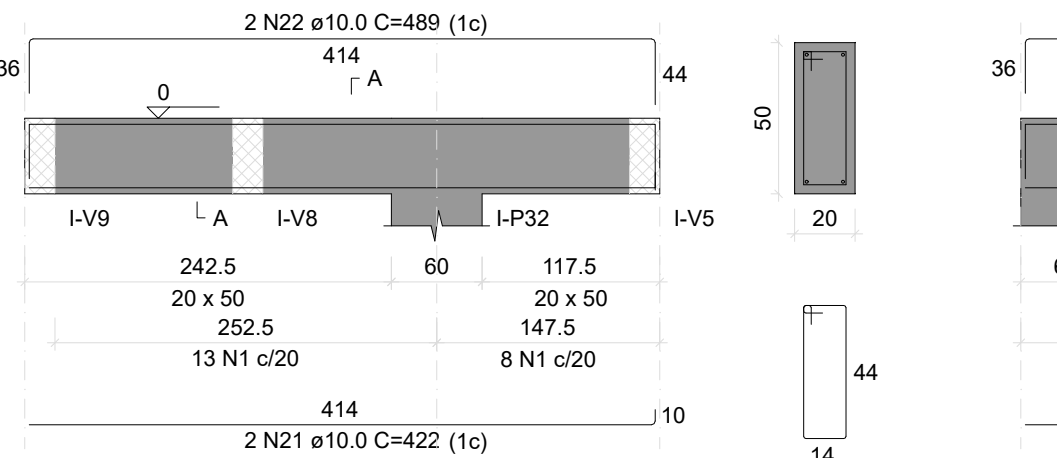
I-V17  
ESC 1:50



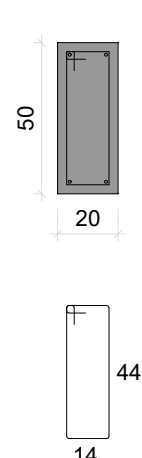
SEÇÃO A-A  
ESC 1:25



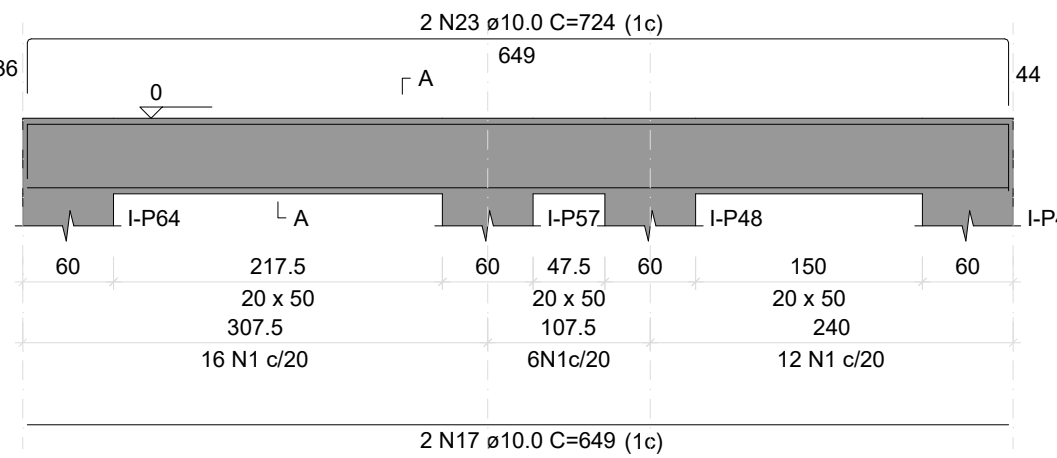
I-V18  
ESC 1:50



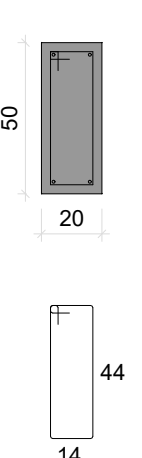
SEÇÃO A-A  
ESC 1:25



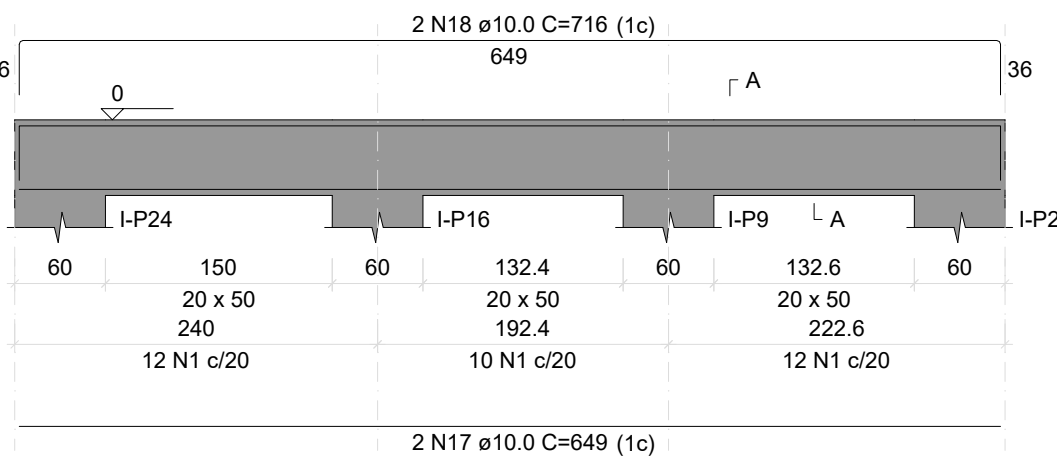
I-V19  
ESC 1:50



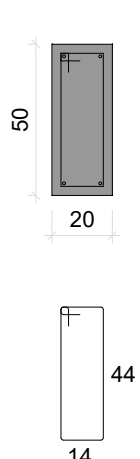
SEÇÃO A-A  
ESC 1:25



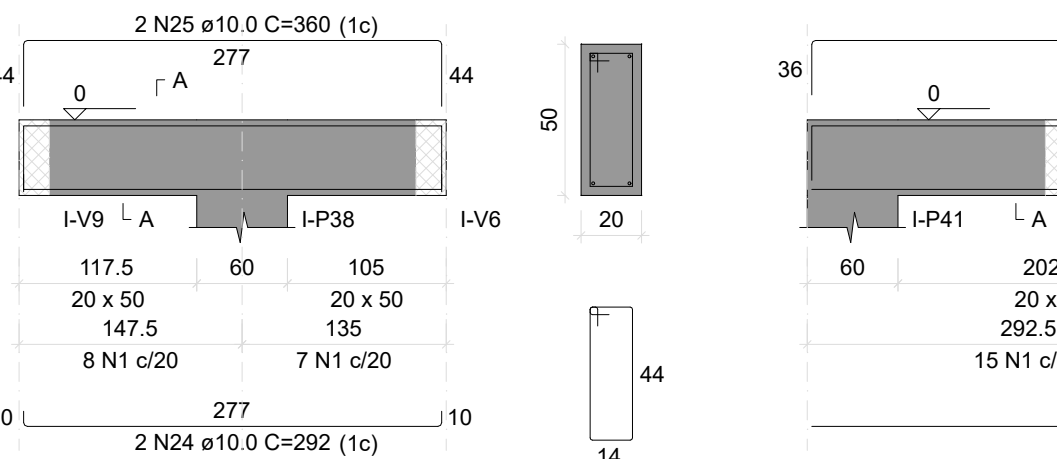
I-V20  
ESC 1:50



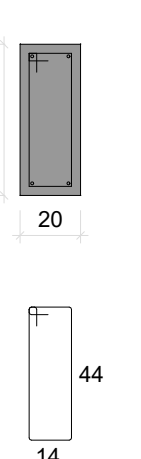
SEÇÃO A-A  
ESC 1:25



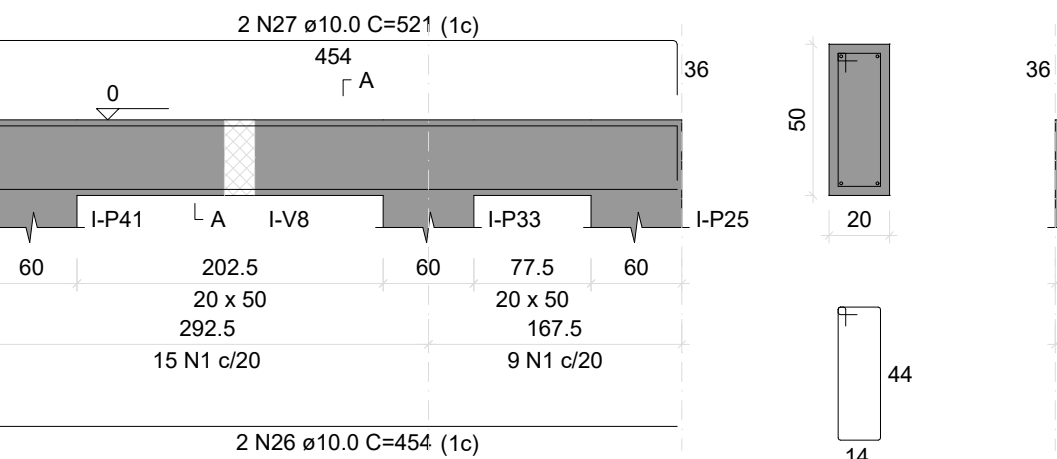
I-V21  
ESC 1:50



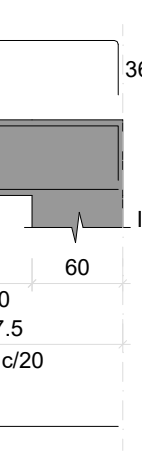
SEÇÃO A-A  
ESC 1:25



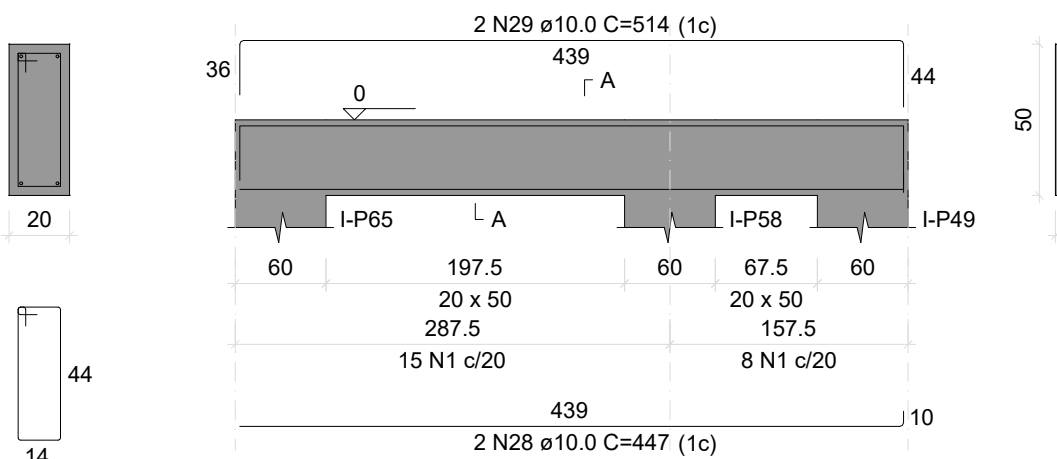
I-V22  
ESC 1:50



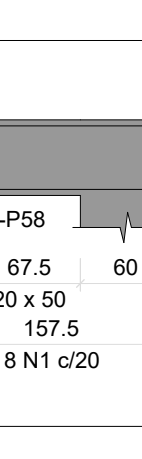
SEÇÃO A-A  
ESC 1:25



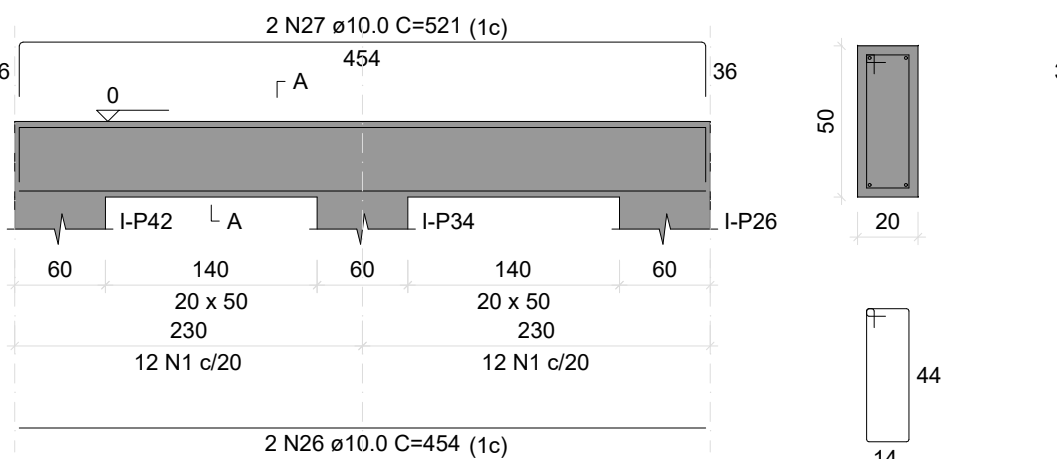
I-V23  
ESC 1:50



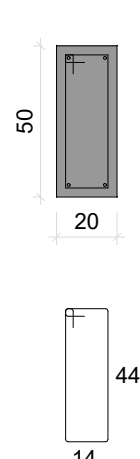
SEÇÃO A-A  
ESC 1:25



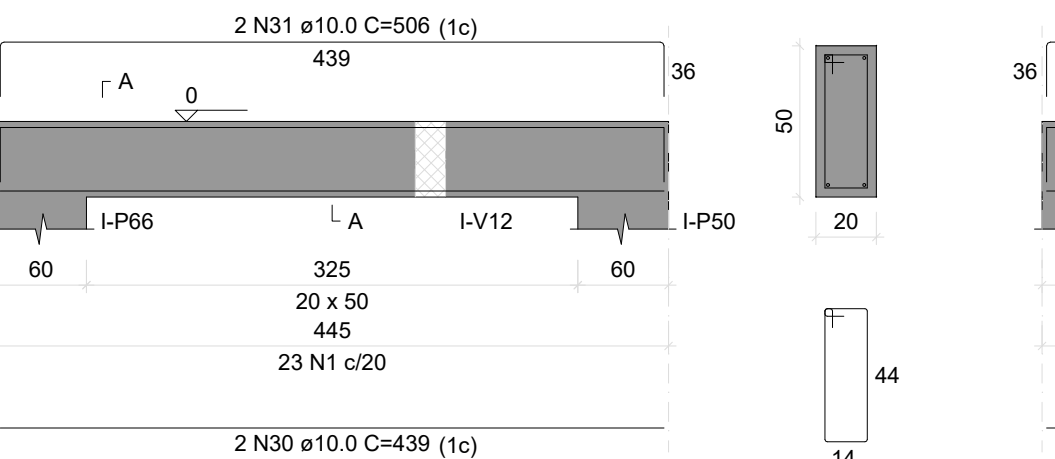
I-V25  
ESC 1:50



SEÇÃO A-A  
ESC 1:25



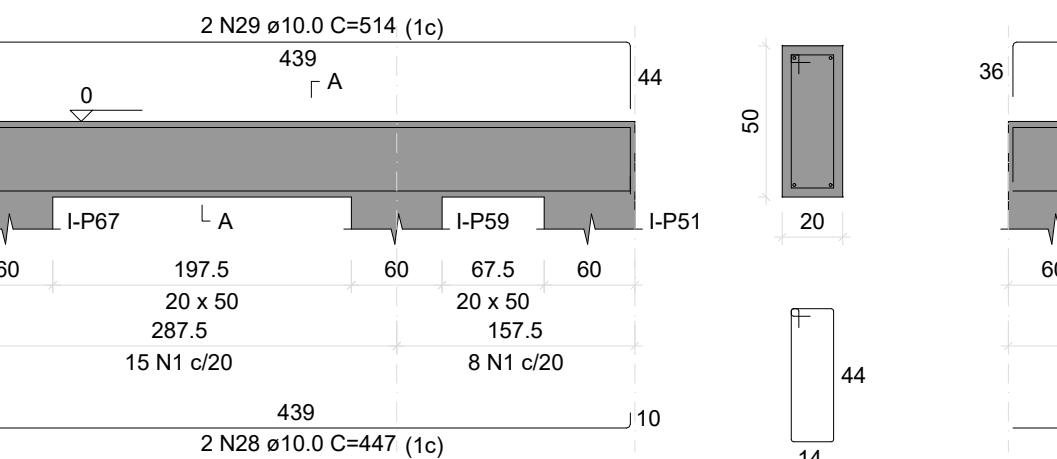
I-V26  
ESC 1:50



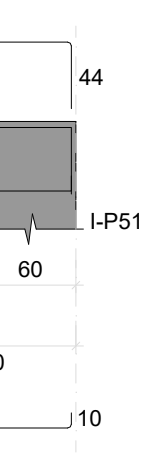
SEÇÃO A-A  
ESC 1:25



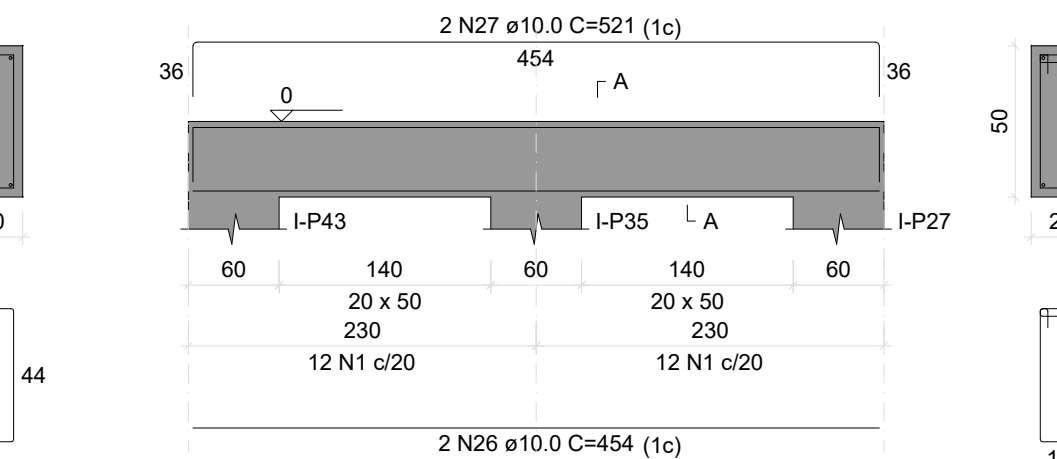
I-V27  
ESC 1:50



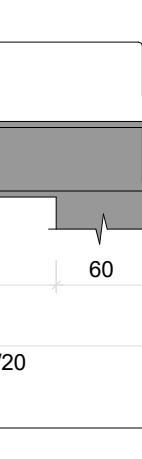
SEÇÃO A-A  
ESC 1:25



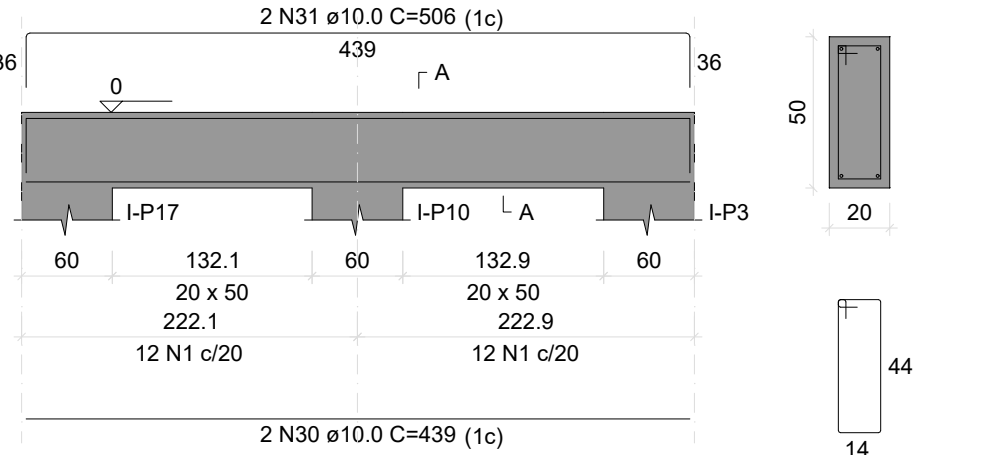
I-V28  
ESC 1:50



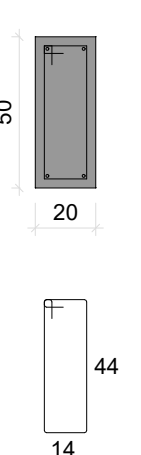
SEÇÃO A-A  
ESC 1:25



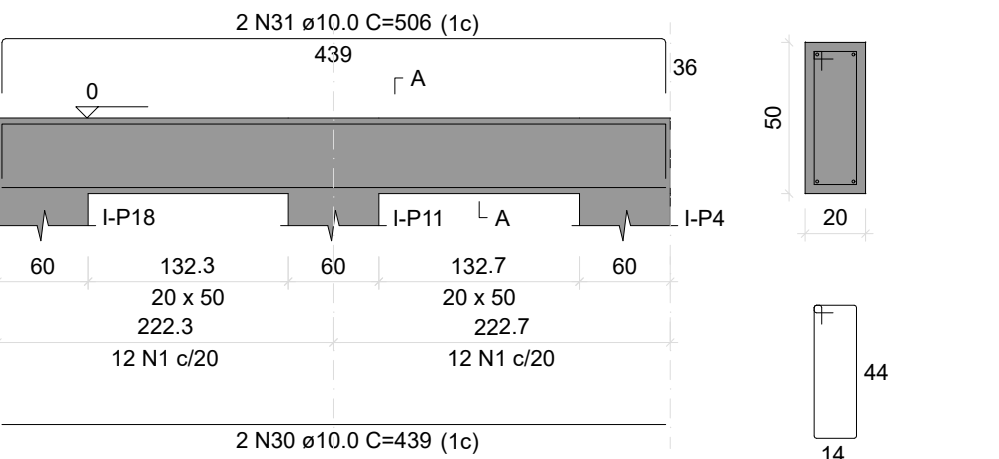
I-V24  
ESC 1:50



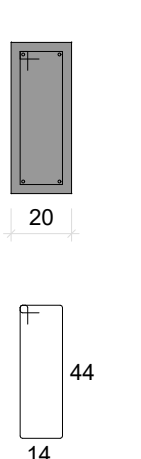
SEÇÃO A-A  
ESC 1:25



I-V29  
ESC 1:50



SEÇÃO A-A  
ESC 1:25



RELAÇÃO DO AÇO

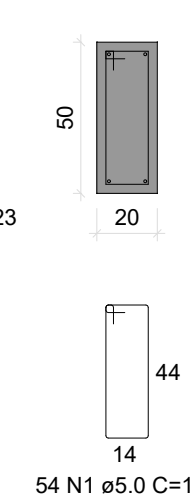
AÇO	N	DIAM (mm)	QUANT	C-UNIT (cm)	C-TOTAL (cm)
CA60	1	5.0	705	127	89535
CA50	2	10.0	1105	2210	2210
	3	10.0	620	1240	1240
	4	10.0	1198	7188	7188
	5	10.0	705	1410	1410
	6	10.0	479	956	956
	7	10.0	287	287	287
	8	10.0	539	1078	1078
	9	10.0	1084	2168	2168
	10	10.0	362	724	724
	11	10.0	312	624	624
	12	10.0	1140	2280	2280
	13	10.0	965	1930	1930
	14	10.0	1085	2170	2170
	15	10.0	1049	2098	2098
	16	10.0	1116	2232	2232
	17	10.0	649	3894	3894
	18	10.0	716	2864	2864
	19	10.0	292	1168	1168
	20	10.0	359	1436	1436
	21	10.0	422	844	844
	22	10.0	489	978	978
	23	10.0	724	1448	1448
	24	10.0	292	584	584
	25	10.0	360	720	720
	26	10.0	454	2724	2724
	27	10.0	521	3126	3126
	28	10.0	4	447	1768
	29	10.0	4	514	2056
	30	10.0	6	439	2634
	31	10.0	6	506	3036

RESUMO DO AÇO

AÇO	DIAM (mm)	C-TOTAL (m)	PESO + 10% (kg)
CA50	10.0	579	392.7
CA60	5.0	895.4	151.8
PESO TOTAL (kg)			
CA50			392.7
CA60			151.8

Volume de concreto (C-25) = 9.22 m³  
Área de forma = 110.70 m²

SEÇÃO A-A  
ESC 1:25



TODAS AS MEDIDAS E NÍVEIS DEVERÃO SER CONFERIDOS NO LOCAL.

R003			
R002			
R001			
REVISÃO	ALTERAÇÕES	EMIÇÃO	RESPONSÁVEL

UNIDADE DE SAÚDE QUINTA DO PORTAL

 <b>PREFEITURA MUNICIPAL DE PORTO ALEGRE</b> SECRETARIA MUNICIPAL DE OBRAS E INFRAESTRUTURA DIRETORIA DE PROJETOS E OBRAS VIÁRIAS			
RESPONSÁVEIS TÉCNICOS PROJETO DE ARQUITETURA: <b>JULIANO FABRO</b> ARQUITETO E URBANISTA CAU-A22875-3   ID. FUNC.: 1609270	PROJETO DE ARQUITETURA: <b>LUIZ PRESTES</b> ARQUITETO E URBANISTA CAU-A23531-8   ID. FUNC.: 270122	PROJETO EXECUTIVO ESTRUTURAL: <b>AMANDA DA CUNHA FIGUEIRA</b> ENGENHEIRA CIVIL CREA RS193.391   ID. FUNC.: 1606638	COORDENADOR <b>CÉSAR FABRÍCIO BREDA</b> DESENHO <b>AMANDA</b>

OBRAS <b>US QUINTA DO PORTAL</b>	ÁREA <b>672.53 m²</b>
ENDEREÇO <b>ESTRADA AFONSO LOURENÇO MARIANTE, Nº 5547 - LOMBA DO PINHEIRO</b>	MUNICÍPIO <b>PORTO ALEGRE/RS</b>
PROJETO <b>EXECUTIVO ESTRUTURAL</b>	ASSUNTO <b>SETOR SI VIGAS DE FUNDAÇÃO - 02</b>
ESCALA <b>INDICADA</b>	DATA <b>ABRIL/2024</b>
NOME ARQUIVO <b>USQP-2024-EST-PEE.dwg</b>	Nº PRANCHA <b>PE07</b>